



Ashtons

The Barnby, Blackberry Walk, Osbaldwick, York, YO31 0TN

The Barnby, Blackberry Walk  
Osbalwick, York  
YO31 0TN

£395,000



Located within the final phase of the award-winning Derwenthorpe development, Blackberry Walk, this stylish end-terrace home offers well-designed, energy-efficient living in the popular area of Osbalwick, to the east of York. Ideally positioned for access to the city centre, York University and the A64, the area also benefits from a range of local amenities and regular bus connections.

Internally, the property has been thoughtfully designed to suit modern living, with a spacious open-plan living and dining area forming the heart of the home. The kitchen is finished to a high specification with contemporary units and quality fittings, while a convenient downstairs WC completes the ground floor.

To the first floor are three well-proportioned bedrooms, along with a house bathroom and a separate utility space, adding a practical touch rarely found in similar homes.

The homes at Blackberry Walk are finished to a high specification, featuring modern kitchens and bathrooms, light-filled living spaces and private gardens, all designed with comfort and energy efficiency in mind. Heating is provided via an air source heat pump, with underfloor heating to the ground floor. A parking space is allocated to each property.

A well-designed modern home in a popular and convenient location - further details available on request, please contact our office on 01904 659222. Viewing strictly by appointment.

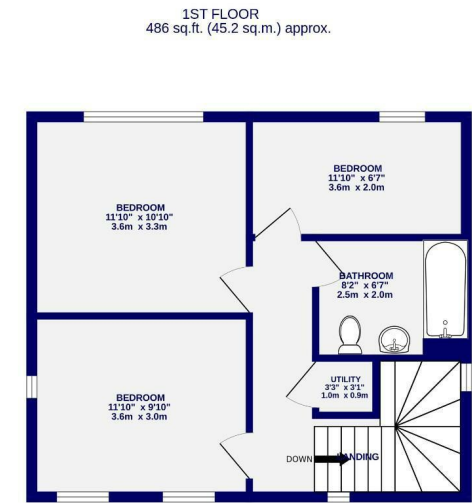
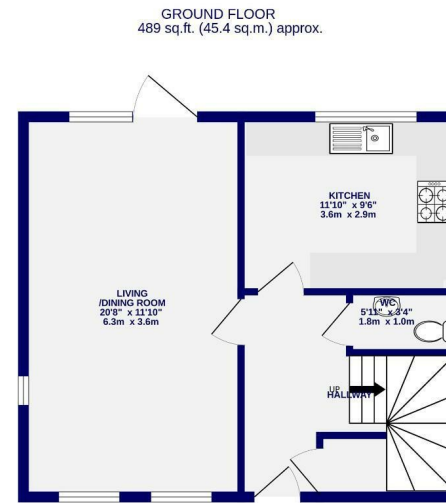
\*\*The CGI images are for illustrative purposes only and should be used as a guide. They should not be relied upon as an exact representation of the finished product.\*\*



# The Barnby, Blackberry Osbaldwick, York YO31 0TN

Freehold  
Council Tax Band -

- End Town House
- Three Bedrooms
- Two Bathrooms
- Allocated Parking
- Open Plan Living Area
- New Build Home
- EPC TBC



TOTAL FLOOR AREA : 975 sq.ft. (90.6 sq.m.) approx.  
Whilst every attempt has been made to ensure the accuracy of the floorplan, measurements of rooms and any other items are approximate. If included in the plan the garage/porches will form part of the overall floor area and no responsibility is taken for any error, omission or mis-statement. This plan is for illustrative purposes only and should be used as such by any prospective purchaser. The services, systems and appliances shown have not been tested and no guarantee as to their operability.  
Made with Metropix ©2026

These particulars have been prepared as accurately and as reliably as possible, but should not be relied upon as 'statement of fact'. If there is any point which is of particular importance to you, please contact the office and we would be pleased to check the information. We have not tested any services, appliances, equipment or facilities and nothing in these particulars should be deemed to be a statement that they are in good working order, or that the property is in good structural condition or otherwise. Any areas, measurements, floor plans or distances referred to are given as a guide only and are not precise. Purchasers must satisfy themselves by inspection or by otherwise regarding the items mentioned above and as to the correctness of each of the statements contained in these particulars. No person in the employment of Ashtons has any authority to make or give any representation or warranty whatsoever in relation to this property or these particulars nor enter into any contract relating to the property on behalf of the vendor.